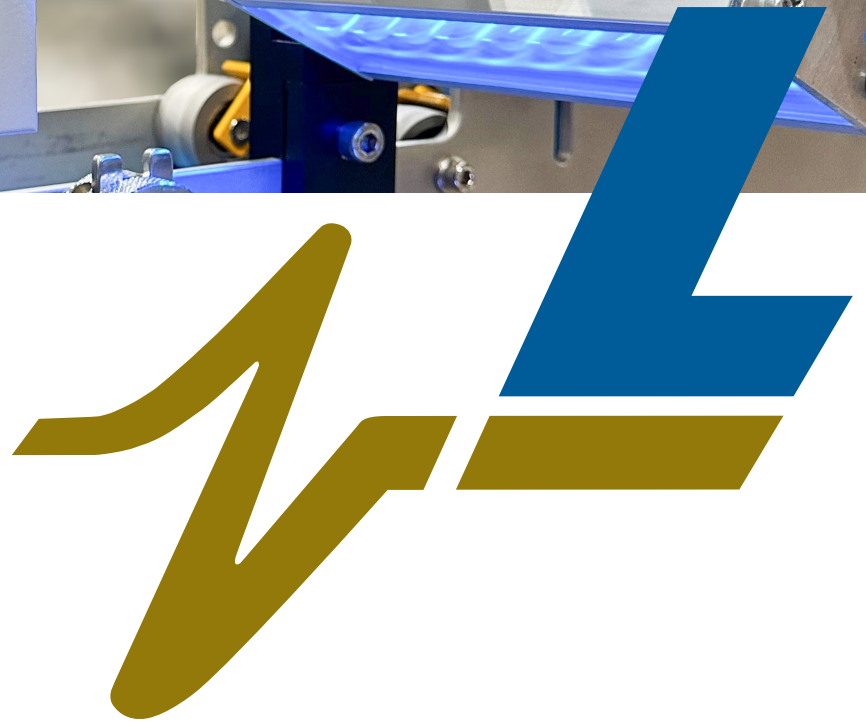




# LearyVIEW

**FLEX**



# LearyVIEW FLEX

The LearyVIEW Flex multi-camera inspection system monitors for glue inside and outside of a specified region, missing flaps, handles, folds and skewed product and is suited for all carton or box applications.

Eliminate inside glue stickers on high-speed straight-line machines or utilize complete QA inspection on 6-pack beverage carriers, all using the new LearyVIEW Flex intuitive and simple operating software.

With the ability to set different tolerances for the front and the back of glue patterns, this camera solution reduces waste by allowing minor preset variation of less

critical elements while keeping tight tolerances on glue pattern areas that require it.

Once a “Golden Image” is created, this can be stored in the job memory and provide a reference for all future runs ensuring that quality remains forever consistent from first carton to last.

Any defect that results in product rejection is stored in Monet’s reject fail list for quick access to recent failures. The reject list can be used to access the live image of the failed product for easy-to-view analysis and corrective actions.

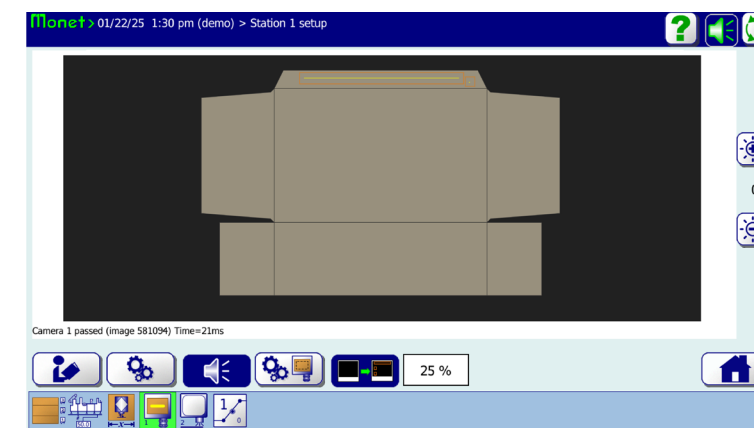
- Multi-use camera for maximum inspection per device
- Inspect glue in desired target area up to 685 mpm (2,250 fpm)\*
- Inspect specks of glue outside of target area as small as 2 mm wide
- Monitor for flaps and folds visible in the camera’s field of view
- Skewed carton inspection
- Multiple camera options based on FOV size

\* Based on camera and speed selection

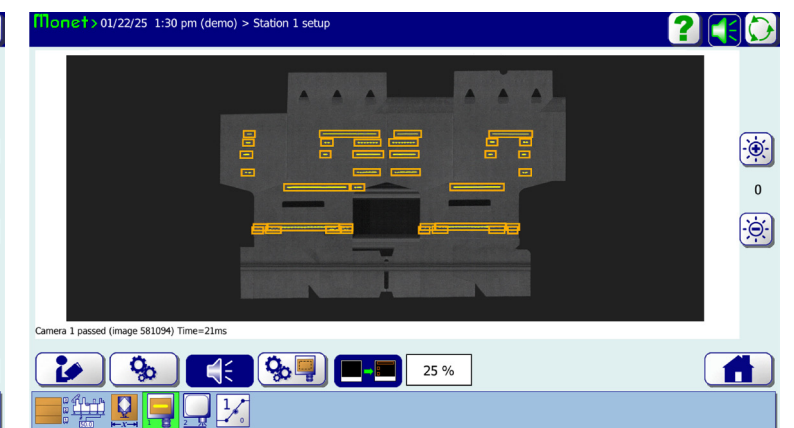
- Simple camera setup on Monet 3.0 operating screen
- 53 cm (21 in) 16:9 wide screen
- LearyNET Remote diagnostic capability for post-installation support
- Ideal Use:
  - Beverage carriers
  - High speed straight line
  - Confectionery and stencil glue pattern cartons

## MULTI-CAMERA INSPECTION

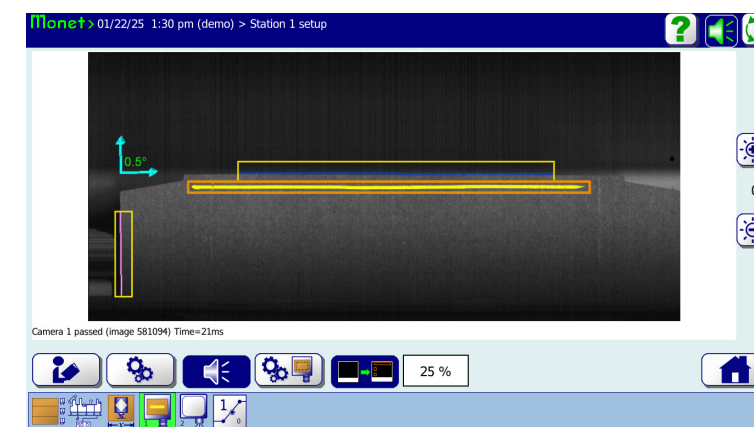
LearyVIEW Flex camera inspection can operate as individual functions or multi-functional with glue, handles, flaps and skew inspection.



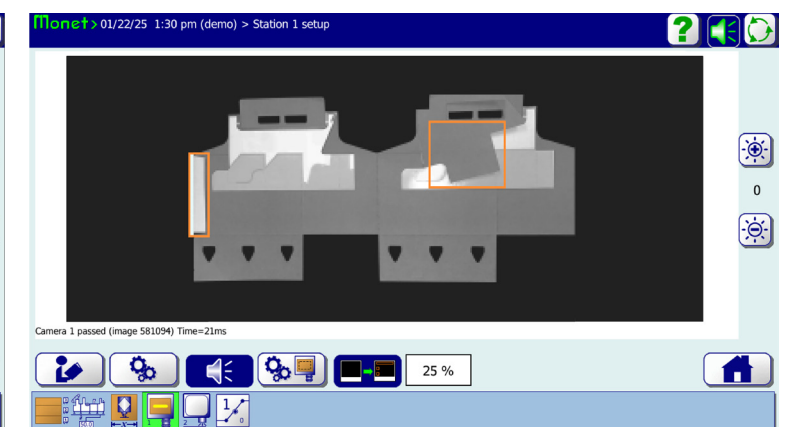
Fourth panel glue inspection



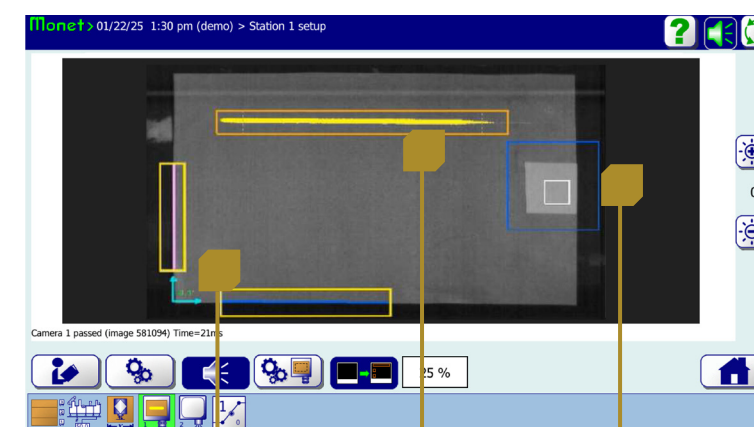
Beverage carrier glue inspection



Skew inspection



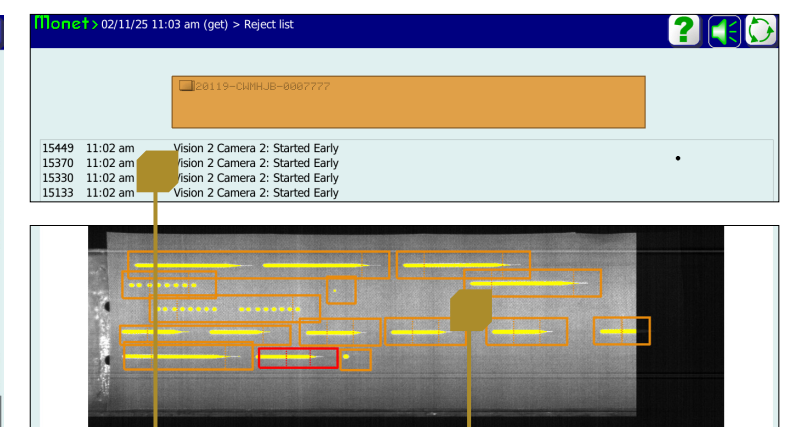
Handles and Flaps inspection



Skew inspection

Glue inspection

Flap inspection



Reject failure list

Past failure image

## POWER REQUIREMENTS

- Voltage: 85-264 VAC
- Frequency: 47-63 Hz

## SYSTEM REQUIREMENTS

- Leary Array controller
- Available pattern station with valve output
- Ethernet port on the controller
- Monet version 3.0 or higher
- 3365 controller processor or higher

## COMPLETE SYSTEM INCLUDES

- LearyVIEW controller
- Inspection camera
- UV Lamp
- Mounting hardware
- Cables and trigger

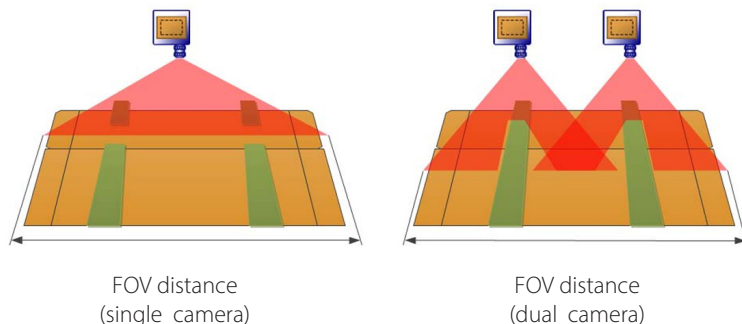
## LEARYVIEW FLEX CONTROLLER

- Dimensions:
  - 44 cm (17.0 in) w
  - 31 cm (12.3 in) h
  - 27 cm (10.8 in) d
- Weight: 12 kg (25.5 lbs)

## CONFIGURATION OPTIONS

- Field of View (FOV) options
  - 100 mm (3.9 in): single camera
  - 260 mm (10.2 in): single camera
  - 520 mm (20.5 in): single camera
  - 1,000 mm (39.4 in): dual camera
- Choose dual camera option for increased FOV coverage
- Filter color option
  - Blue: Standard
  - Green: Ideal for recycled board
- Camera speeds up to 685 m/min (2,250 ft/min) for all FOV options with product 127 mm (5 in) from lamp

## CAMERA STYLE



## CAMERA DIMENSIONS

