



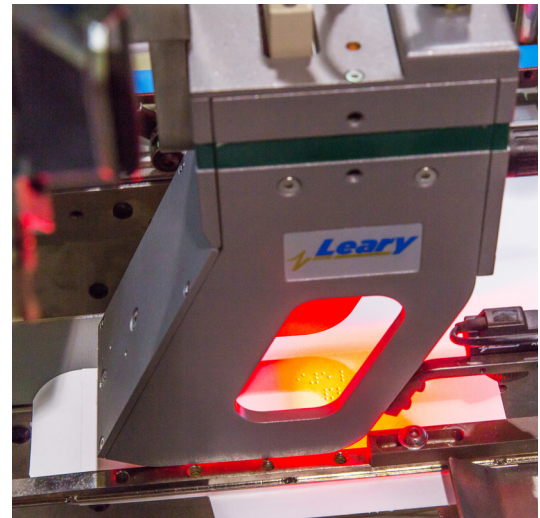
## LearyVIEW BRAILLE

The LearyVIEW Braille inspection system combines the most powerful and innovative technologies to achieve in-line Braille detection at full production speeds.

With the touch of a button the Braille is learned, decoded and displayed on the screen to be verified as correct by the operator. Once this master is accepted, every subsequent carton is scanned verify a perfect match.

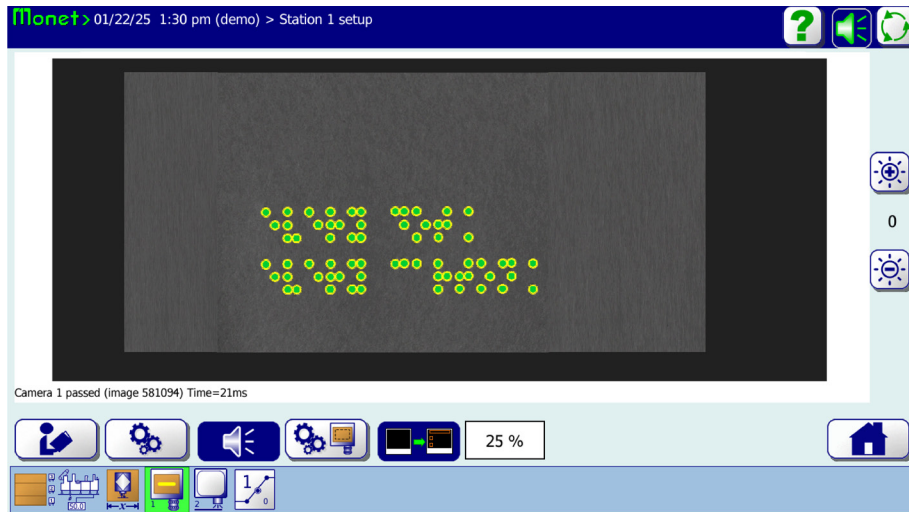
The LearyVIEW system delivers impeccable quality assurance, checking each and every Braille dot to guarantee all of the dots are in exactly the correct position relative to one another and to the carton panel.

Achieve cutting edge quality assurance and performance with the LearyVIEW Braille Inspection system by ensuring Braille remains constant in every way.



- Up to 150,000 cartons/hr
- Available in 5 or 8 line Braille option
- Up to 50 characters per line
- Monitors embossed presence, placement and register
- Simple operator setup with Monet 3.0
- Flexible mounting for various machine positions
- Integrated with Array systems
- LearyNET Remote diagnostic capability for post-installation support

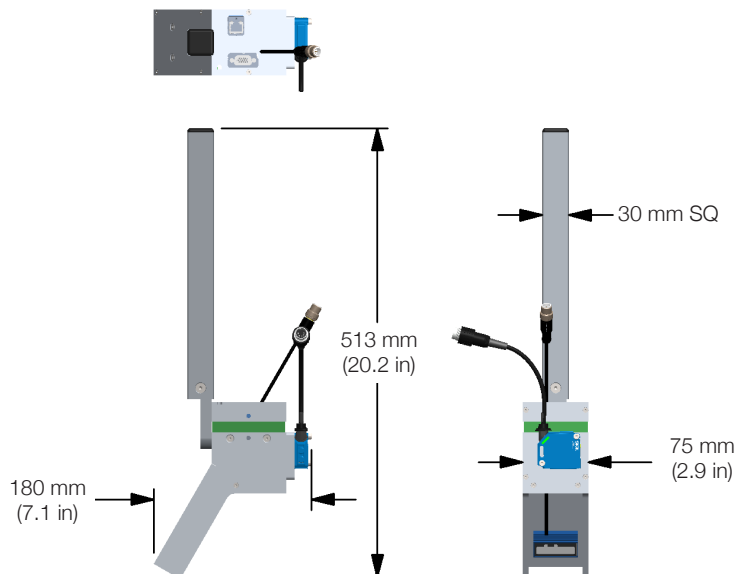
## CAMERA INSPECTION INTEGRATION



### INSPECTION SPECIFICATIONS

- Inspect standard Marburg Medium Braille font
- Visual Braille decoded in English letters and numbers on Monet screen, yielding no impact to inspection

### CAMERA DIMENSIONS



### SYSTEM REQUIREMENTS

- Leary Array controller
- Available pattern station with valve output
- Ethernet port on the controller
- Monet version 3.0 or higher
- Version 3365 controller processor

### COMPLETE SYSTEMS INCLUDES

- LearyVIEW controller
- Braille camera
- Mounting hardware
- Cables and trigger
- 53 cm (21 in) 16:9 wide screen

### CAMERA

- Dimensions: See diagram
- Weight: 1.6 kg (3.5 lbs)

### POWER REQUIREMENTS

- Voltage: 85-264 VAC
- Frequency: 47-63 Hz

### LEARYVIEW CONTROLLER

- Dimensions:
  - 44 cm (17.0 in) w
  - 31 cm (12.3 in) h
  - 27 cm (10.8 in) d
- Weight: 12 kg (25 lbs)