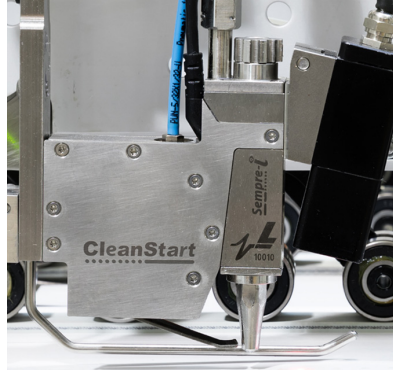




Barcode



On-Target



Monet

## Array™ LS-904 with Monet™ OS Versatile Controller

The LS-904 with Monet OS Versatile Controller incorporates separate extrusion, detection or a combination of extrusion and detection together. With this combination system, you can also utilize our On-Target™ automatic glue line correction software for enhanced quality and productivity.

The LS-904 controller produces 100% fit-for-use products. All triggers and encoders are monitored through our closed loop SureScan™ technology, guaranteeing 100% inspection. Choose from over 70 detection options to complete your system including glue, barcode, pharmacode, Braille, missing window, skewed product, double feed and more. The LS-904 is capable of jam and overlap detection, electronically monitoring product flow.

iQ™ Smart Services cloud-based data collection software is available, allowing you to analyze production data such as job tracking, production totals, total waste, down codes, defects and more.

- Versatile model configurations:
  - Up to 4 or 8 extrusion only
  - Up to 4 detection plus barcode and pharmacode
  - Up to 8 extrusion / 4 detection plus barcode and pharmacode
- Optional SEQUIRE ID™ fingerprint access control LSI screen
- Option for an additional remote touch screen 38 cm (15 in)
- Over 70 monitoring options
- Accurate at 200,000 pieces/hr and 910 m/min (3,000 ft/min)
- Versatile rejection options

[www.whleary.com](http://www.whleary.com)

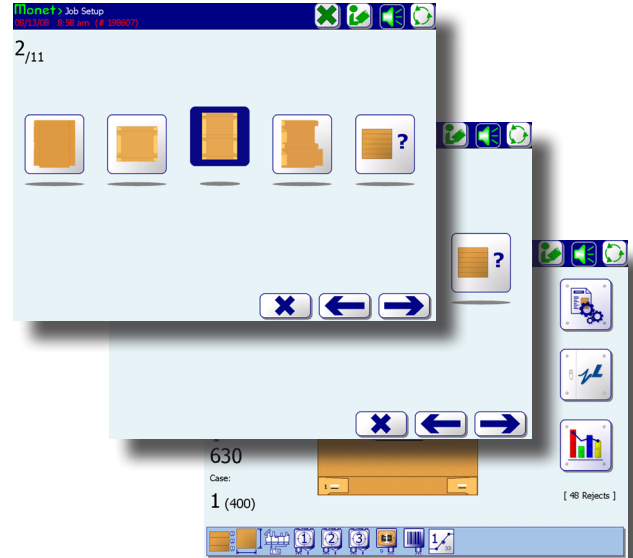
CONTROLLER

# Array LS-904 with Monet



The LS-904 Versatile controller is equipped with Monet Software

- Simple Job Setup for Glue Application and Glue Detection
- Operator Friendly
- Language Neutral
- Cost Savings



## CONTROLLER SPECIFICATIONS

- Up to 4 or 8 channels
- 20 Events per channel
- 200 Spots per channel
- 8 Triggers
- Trigger assignment option
- Separate feed shutdown
- 2 Encoder inputs
- 1 or 2 Glue pressure zones
- Remote purge option
- Batch count option
- Lockout feature
- Double feed, Jam detection - machine shutdown
- Metric or Standard
- Stores 1000+ jobs
- Resolution
  - 0.25 mm (0.01 in) at 182 m/min (600 ft/min)
  - 0.75 mm (0.03 in) at 545 m/min (1,800 ft/min)
  - 1.25 mm (0.05 in) at 910 m/min (3,000 ft/min)

## WORKS WITH

- All Leary valves
- Robatech hotmelt valves
- All glue feed options
- All Leary Quality Assurance Solutions
- iQ Cloud-Based Data Collection

## REJECTION OPTIONS

- Spray Rejection
- Batch/Reject Kicker
- Rotary Ejector
- Diverter Ejector

## SYSTEM INCLUDES

- Controller
- LSI touch screen
- Monet software for 4 or 8 valves
- Encoder

## ADDITIONAL PURCHASE ITEMS

- Controller stand
- Optional SEQURE ID fingerprint access control LSI screen
- Interface language linked to fingerprint
- Additional Touch Screen
- iQ Cloud-Based Data Collection
- Glue regulation unit
- Glue manifold
- Valves
- Barcode, Pharmacode and many more detection options
- Rejection device

## PHYSICAL CHARACTERISTICS

### Control Box

- Dimensions
  - 51 cm (19.9 in) w
  - 45 cm (17.9 in) h
  - 26 cm (10.1 in) d

### Touch Screen

- Dimensions (LSI)
  - 38 cm (15 in) w
  - 30 cm (12 in) h
  - 5.8 cm (2.3 in) d
- Dimensions (SEQURE ID LSI)
  - 41.3 cm (16.3 in) w
  - 30.0 cm (12.0 in) h
  - 5.70 cm (2.20 in) d

### Power Requirements

- Voltage: 85 - 264 VAC
- Frequency: 47 - 63 Hz
- Power Consumption: 900 VA max.

## SAFETY

- CE tested

Corporate Office  
8440 B West 183 Place  
Tinley Park, IL 60487  
USA  
PH: +1(708) 444-4900  
sales.us@whleary.com  
www.whleary.com

European Office  
2 Seax Way, Basildon  
Essex SS15 6SW  
United Kingdom  
tel: +44 (0) 1268 490035  
info@whleary.co.uk  
www.whleary.co.uk

