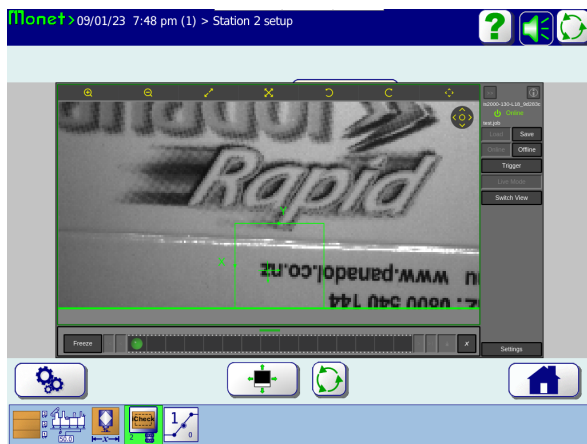


iCHECK CAMERA

Leary's iCheck smart camera comes with a flexible tool library offering a wide range of inspection options. Simple programming features allow operators to quickly setup inspection of labels, inserts, text, date codes, flaps and more.

iCheck can be integrated with most existing Leary systems to allow for quality inspection and rejection. Multiple interface options are available for setup and display based on Array or MaQ+ controller model.



Camera integration into existing LSI Monet Screen (15 in)

- Inspects labels, inserts, text, date codes, flaps, and more
- Equipped with pattern recognition
- Simple programming features reduce operator setup time
- Integrate with most existing Leary Array and MaQ+ systems
- Flexible to use for a variety of quality assurance needs
- Up to (3) cameras per controller
- Optional display interface

iCHECK CAMERA

POWER REQUIREMENTS

- Class 3 PoE 5W

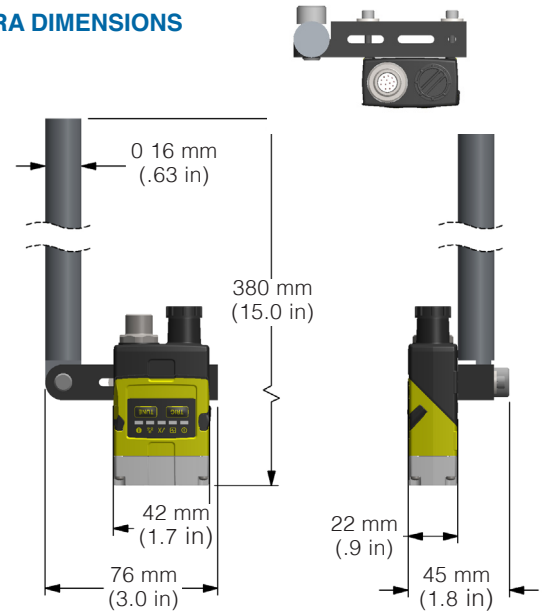
SYSTEM REQUIREMENTS

- Leary Array or MaQ+ controller
- Software requirements (based on display option)
- Ethernet port on the controller
- (1) Available detection pattern input
- (1) Available valve output

COMPLETE STATION INCLUDES

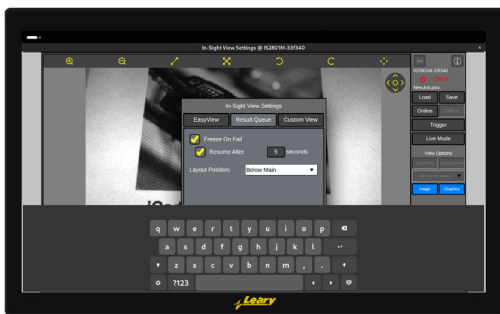
- iCheck camera option, based on application
 - IS2000
 - IS2801
 - IS3800
- Mounting hardware
- Cables
- Trigger
- Camera display components (based on display option)

CAMERA DIMENSIONS



CAMERA DISPLAY OPTIONS

	Array Monet 3.X	Array Monet 2.X	MaQ+ Monet 3.X	MaQ+ Monet 2.X
Stand alone 22-in remote display	•	•	•	•
Toggle on current 22 in LSI screen (with iCheck display module)	•			
Existing LSI screen in Monet - not accessible above 600 FPM - machine-side PC needed for initial setup	•		•	
Stand alone 7-in remote display	•	•	•	•



22 inch remote display
(stand alone or toggled on current screen)



7 inch remote display

W. H. Leary Co., Inc.
8440 W. 183rd Place, Tinley Park, IL 60487, USA

T: +1(708) 444-4900 E: sales.us@whleary.com