



Beverage

Solutions





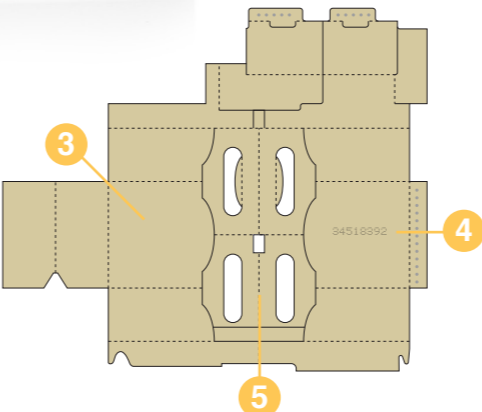
# Beverage Solutions

W. H. Leary Company offers specialized solutions for beverage cartons which require high-speed, complex glue application, detection and quality assurance.

Leary's patented, fail-safe solutions guarantee every carton is inspected by each detection station on the folder gluer. Reliable rejection devices ensure that defective products are safely removed from the production line automatically, without interrupting the machine or reducing productivity.

With unique iQ™ Smart Services technology, Leary provides relevant data to help make informed process improvement decisions. This cloud-based data collection solution delivers real-time data from the production floor to your browser or smart device providing multiple production reports for analysis. Additionally, iQ Serialization can deliver comprehensive details about the quality and production conditions of each individual carton immediately, or stored for retrieval in the future.

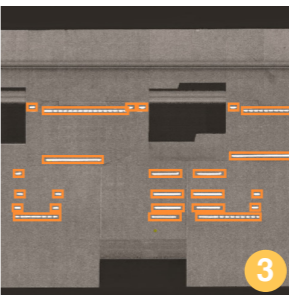
Leary offers the complete solution for your glue application, quality assurance and data collection needs, helping you deliver the highest quality cartons to your customer.



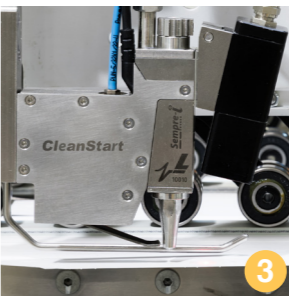
- ### Print Inspection
- Full in-line print inspection at 425 m/min (1400 ft/min)
  - Identify print defects including color, blemishes and character recognition
  - Blemish detection as small as 0.4 mm (.02 in)
  - Seamless retrofitting to your existing folder gluer



- ### Mixed Copy
- Monitor mix prevention at 2,000 scans/sec
  - Multiple scans per code to guarantee reliability
  - Scan barcodes printed on any panel
  - Simple set-up with Monet OS



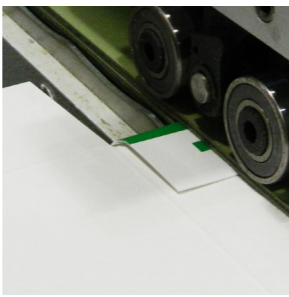
- ### LearyVIEW™ Glue Camera Detection
- Detect glue in desired target areas
  - Reject for glue outside of target areas
  - Detect glue dots as small as 2 mm (.08 in)
  - Monitor complete carton blank with multiple cameras
  - Real time visualization with Monet OS



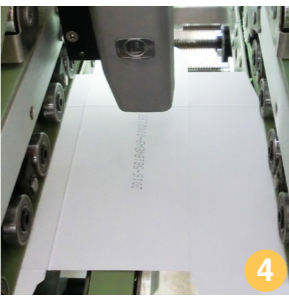
- ### Gluing and/or Sensor Detection
- Detect for glue presence, placement and volume
  - Application with +/- 1 mm accuracy
  - Built-in maintenance tracking
  - Slim valve with easily adjustable mounting hardware
  - Optimize gluing with On-Target™ software
  - UV or moisture sensor option



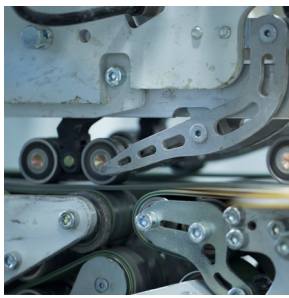
- ### MONET™ OS with SEQUIRE ID™
- Decrease make-ready and training time
  - Simple sensor and software set-up
  - iQ™ Smart Services cloud-based data collection
  - Built-in fingerprint access control
  - Limit access to critical controller settings



- ### Flap / Panel Detection
- Monitor absence and presence of flaps / cutouts
  - Measure the total length of the panel
  - Monitor leading and trailing edges are undamaged
  - Detect for multiple panels



- ### Carton Serialization
- Inkjet print a unique number on every carton
  - Certificate of inspection with process information
  - Understand root cause of customer complaints
  - Offer immediate corrective action responses



- ### Carton Rejection
- Activate any OEM rejection device
  - Optional Leary in-line rejection device for retrofit
  - Eject a single faulty product at full machine speed
  - Reject verification to ensure defects are removed



- ### Skew Detection
- Detect skewed cartons from feed or turning section
  - Monitor left and right side register shifts
  - Separate tolerance for rejection and machine stop
  - Inhibit glue for skewed cartons



- ### Handle Detection
- Monitor absence / presence of handle
  - Check for correct fold sequence
  - Color and contrast sensor option
  - Ensure handle is not misfolded or damaged





Leary Headquarters - Tinley Park, Illinois, USA



Robatech Headquarters - Muri, Switzerland

W. H. Leary Company, Inc. is a leading innovative provider of Glue Application, Quality Assurance and Data Collection systems, specializing in the paper converting industries such as folding carton, corrugated box, liquid fill, envelope and bag/sack manufacturing.

Supplying solutions from basic glue application to the latest in-line print inspection system, all of Leary's products

have been designed with a common goal in mind: to allow customers to benefit from leading edge technologies which maximize their machine's potential and deliver 100% fit-for-use products.

W. H. Leary is corporately headquartered in Tinley Park, Illinois, USA, housing engineering, manufacturing and a large demonstration and training center. Multiple sales and service locations are

located throughout North America as well as a subsidiary located in Basildon, United Kingdom.

Leary is partnered with Robatech Gluing Technology, based in Muri, Switzerland and through the Robatech network, offers the most comprehensive cold glue, hot melt and quality assurance solutions with offices in over 60 countries worldwide.



Sales and Service through the Robatech network. Locate a local office: [www.robatech.com](http://www.robatech.com)