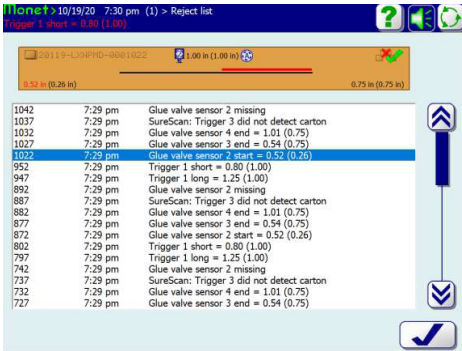


# MONET 2.12 SOFTWARE UPGRADE

This Monet™ Operating Software update focuses on production process improvement, utilizing data driven solutions to aid in efficient and quality guaranteed production. Making quick, informed decision directly impacting production goals is achieved with Version 2.12 with instant production notifications, real-time access to on-screen reject images and multiple plant production reporting.



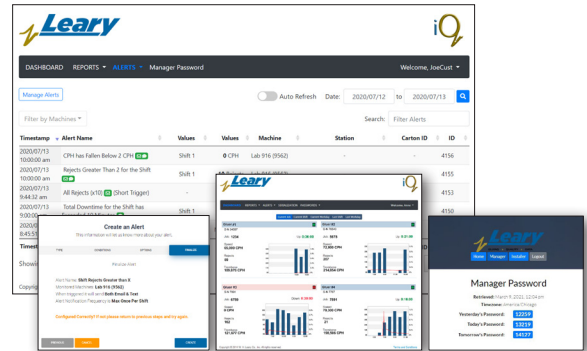
## Detailed Reject Imagery

Quick troubleshooting and review of the reasons for rejected product is achieved with improved product failure imagery on the reject list screen.

This visual representation shows the rejected product panel along with the exact detected failure image. These include failures for glue patterns, barcode, colorcode, and triggers - as the operator would see the reject live on the Monet screen. These images are stored for quick access on the same reject list screen commonly accessed for troubleshooting.

### Products Affected

MAQ, Array LS-4, LS-916, LS-924



## iQ Smart Services | Alerts, Dashboard and Passwords

Maximize iQ Smart Services to include compatibility with new iQ Alerts which sends customized email and SMS notifications in real time, staying connected to production. Production and quality alerts are immediately flagged to offer quick response time.

Additionally, experience improved iQ Dashboard user admin configuration to allow reporting from multi-plant controllers with simple access. Maintain critical software settings which are vital to product quality with iQ Password retrieval. Receive daily self-expiring passwords for necessary approved system setting changes.

### Products Affected

iQ Smart Services