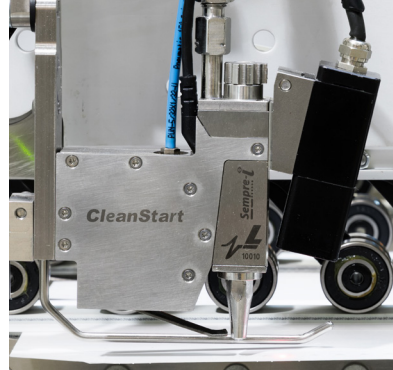




Barcode



On-Target



Monet

Array™ LS-4 with Monet™ OS Versatile Controller

The **LS-4 with Monet OS** Versatile Controller incorporates separate extrusion, detection or a combination of extrusion and detection together. With this combination system, you can also utilize our On-Target™ automatic glue line correction software for enhanced quality and productivity.

The LS-4 controller produces 100% fit-for-use cartons. All triggers and encoders are monitored through our closed loop SureScan™ technology, guaranteeing 100% inspection. Choose from over 70 detection options to complete your system including glue, barcode, pharmacode, braille, missing window, skewed carton, double feed and more. The LS-4 is capable of jam and overlap detection, electronically monitoring carton flow.

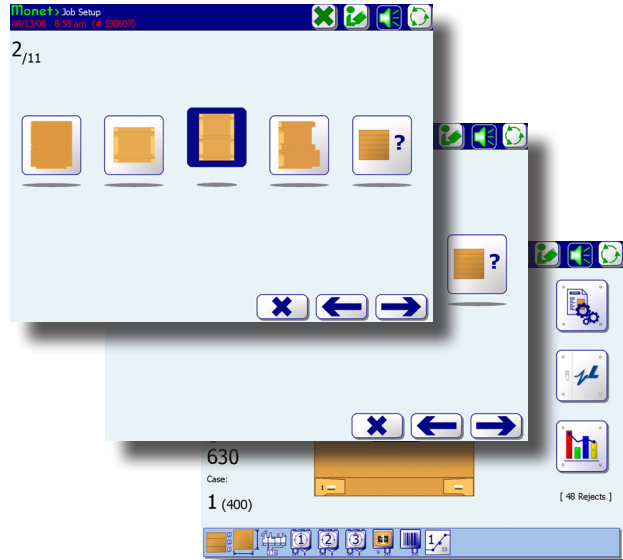
iQ™ Smart Services cloud-based data collection software is available, allowing you to analyze production data such as job tracking, production totals, total waste, down codes, defects and more.

www.whleary.com

- Four models to choose from:
 - 4 extrusion outputs and 4 detection inputs
 - 4 detection inputs only
 - 4 or 8 extrusion outputs only
- Barcode, Pharmacode, plus four additional detection options
- Optional SEQUIRE ID™ fingerprint access control LSI screen
- Option for an additional remote touch screen 38 cm (15 in)
- Over 70 monitoring options
- Accurate at 200,000 cartons/hr and 910 m/min (3,000 ft/min)
- Versatile rejection options

CONTROLLER

Array LS-4 with Monet



The **LS-4** Versatile controller is equipped with **Monet** Software

- Simple Job Setup for Glue Application and Glue Detection
- Operator Friendly
- Language Neutral
- Cost Savings

CONTROLLER SPECIFICATIONS

- 4 or 8 channels
- 20 Events per channel
- 200 Spots per channel
- 8 Triggers
- Trigger assignment option
- Separate feed shutdown
- 2 Encoder inputs
- 1 or 2 Glue pressure zones
- Remote purge option
- Batch count option
- Lockout feature
- Double feed, Jam detection - machine shutdown
- Metric or Standard
- Stores 1000+ jobs
- Resolution
 - 0.25 mm (0.01 in) at 182 m/min (600 ft/min)
 - 0.75 mm (0.03 in) at 545 m/min (1,800 ft/min)
 - 1.25 mm (0.05 in) at 910 m/min (3,000 ft/min)

WORKS WITH

- All Leary valves
- Robatech hotmelt valves
- All glue feed options
- All Leary Quality Assurance Solutions
- iQ Cloud-Based Data Collection

REJECTION OPTIONS

- Spray Rejection
- Batch/Reject Kicker
- Rotary Ejector
- Diverter Ejector

SYSTEM INCLUDES

- Controller
- LSI touch screen
- Monet software for 4 or 8 valves
- Encoder

ADDITIONAL PURCHASE ITEMS

- Controller stand
- Optional SEQUIRE ID fingerprint access control LSI screen
- Interface language linked to fingerprint
- Additional Touch Screen
- iQ Cloud-Based Data Collection
- Glue regulation unit
- Glue manifold
- Valves
- Barcode, Pharmacode and many more detection options
- Rejection device

PHYSICAL CHARACTERISTICS

Control Box

- Dimensions
 - 44 cm (17.5 in) w
 - 38 cm (14.8 in) h
 - 28 cm (10.9 in) d

Touch Screen

- Dimensions (LSI)
 - 38 cm (15 in) w
 - 30 cm (12 in) h
 - 5.8 cm (2.3 in) d
- Dimensions (SEQUIRE ID LSI)
 - 41.3 cm (16.3 in) w
 - 30.0 cm (12.0 in) h
 - 5.70 cm (2.20 in) d

Power Requirements

- Voltage: 85 - 264 VAC
- Frequency: 47 - 63 Hz
- Power Consumption: 700 VA max.

SAFETY

- CE tested

Corporate Office
8440 B West 183 Place
Tinley Park, IL 60487
USA
PH: +1(708) 444-4900
sales.us@whleary.com
www.whleary.com

European Office
2 Seax Way, Basildon
Essex SS15 6SW
United Kingdom
tel: +44 (0) 1268 490035
info@whleary.co.uk
www.whleary.co.uk

